

### State Bird



In 1943, the Chinese ring-neck pheasant

was chosen the state bird. This bird was originally from China. Many attempts were made to introduce the bird into South Dakota. The ring-necked pheasant can be found throughout most of South Dakota, except for the Black Hills.

### State Flower

In 1903, the American Pasque Flower was

designated the state flower. It is the first flower to show its blossom in the spring in South Dakota. The first flower to bloom in the spring it lent itself to many legends and the hearts of pioneers.



### State Tree



In 1947, the Black Hills Spruce was chosen the state tree. It is a variety of

white spruce found only in the Black Hills of South Dakota.

### State Fish



In 1982, the Walleye was designated as the state fish.

It is a most sought-after game fish in South Dakota.

### State Animal

In 1949, the Coyote was



designated the state animal. Coyotes range

throughout South Dakota. They are most abundant along the Missouri River, its tributaries, and in the Black Hills.

### State Insect

In 1978, the Honey Bee

designated the state insect.



The state of South Dakota is a leader in honey production.

### State Mineral Stone

In 1966, the Rose Quartz was adopted as the state mineral.

Rose quartz is mined in the southern Black Hills. It is used primarily for ornaments and jewelry.



A to Z Kids Stuff <http://www.aozkidsstuff.com>

### State Gemstone



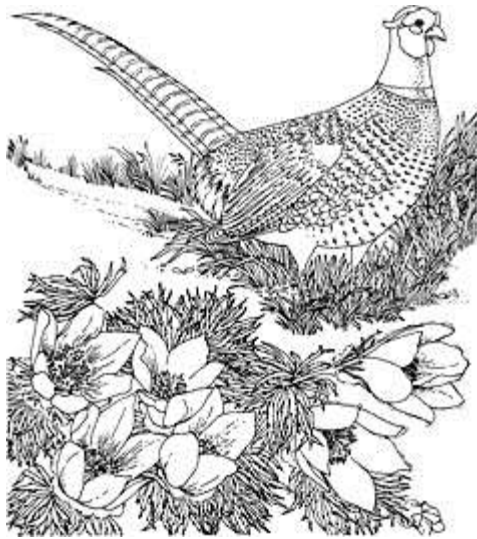
In 1966, Fairburn Agate was adopted as the

state gem. It is a semiprecious stone first discovered near Fairburn, South Dakota.



# South Dakota The Mount Rushmore State

# Color South Dakota's State Symbols



South Dakota State Bird: Chinese ring-necked pheasant



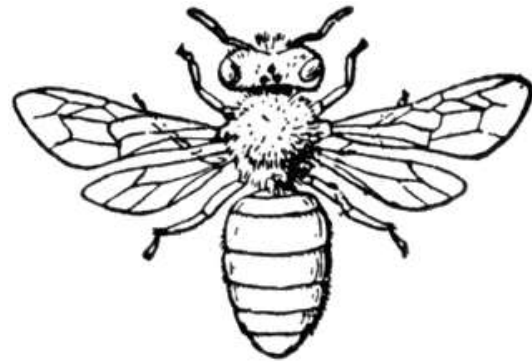
South Dakota State Tree: Black Hills Spruce



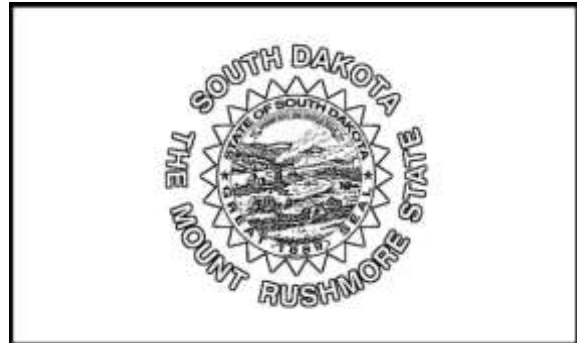
South Dakota State Flower:  
American Pasque Flower



South Dakota State Animal: Coyote



South Dakota State Insect: Honey Bee



### South Dakota 40th State

South Dakota State Motto: Under God the people rule

Origin of Name: From the Sioux tribe, meaning allies.

